



**Are you nearsighted (myopia)?
Is your prescription -3.00 or stronger?
Then this information is important for you!**

Nearsightedness can lead to sudden issues in one or both eyes. These problems usually occur after the age of 40. The stronger your prescription, the higher your risk of these issues.

If you have had implanted lenses or laser treatment, then your prescription has been corrected, but your risk of problems has not decreased.

On the reverse of this card, you can find details about possible issues and what action you should take. Please keep this information. You might need it later.

Have you suddenly got one or more of these symptoms?
Call your general practitioner or consult an optometrist
immediately. If it is evening or the weekend, contact the
24/7 medical service. Do not wait until the next working day.
Act quickly to prevent permanent damage to your vision!



Many new floaters or
spots in vision.



Flashes of light



Shadow or 'curtain'
in vision



Fixed spot(s) in the
center of vision



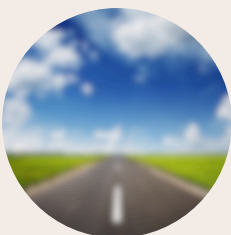
Fixed spot at the edge



Vision that disappears



Distorted vision
(crooked lines)



Sudden blurry vision
that persists



Reduced field of vision

Check one eye at a time and cover the other eye with your hand.

For more information, visit: www.ikbenbijziend.nl
or scan the QR code. If you have other eye complaints or any
(medical) questions, please contact your general practitioner
or a local optometrist

